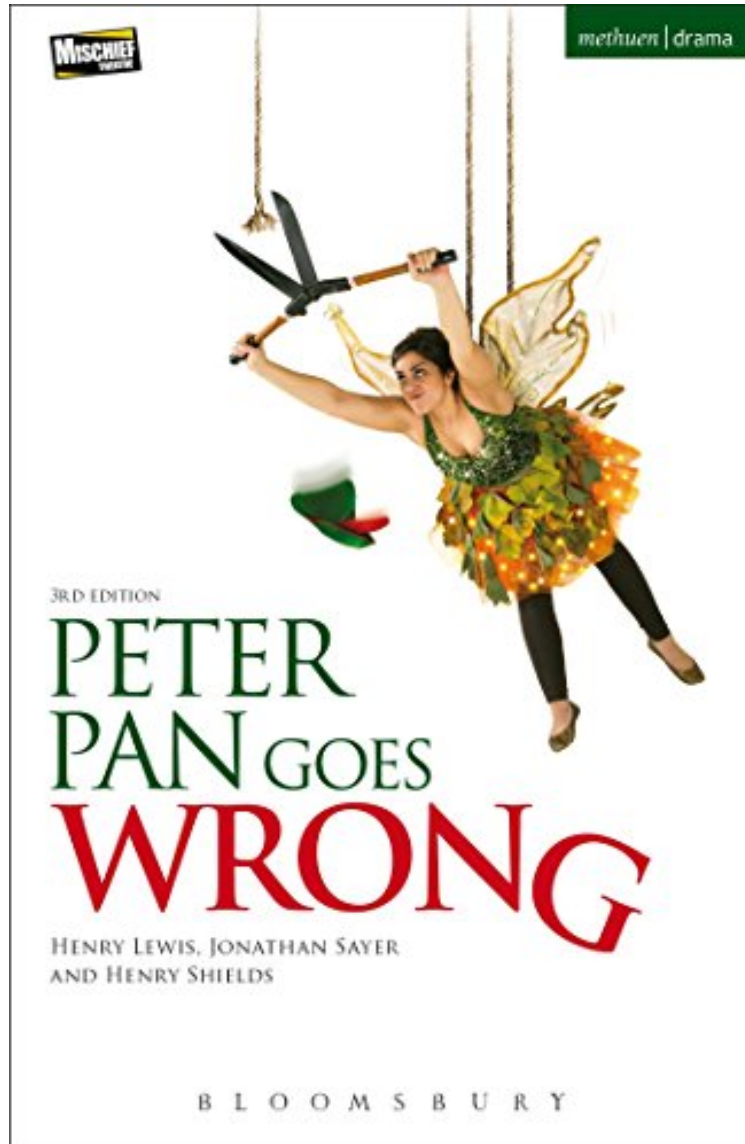


[E-BOOK] Peter Pan Goes Wrong (Modern Plays)

Peter Pan Goes Wrong (Modern Plays)

Henry Lewis, Henry Shields, Jonathan Sayer
**Download PDF / ePub / DOC / audiobook / ebooks*



DOWNLOAD



READ ONLINE

#698404 in Books Henry Lewis Jonathan Sayer Henry Shields 2015-12-25 2015-12-25 Original language: English PDF # 1 7.81 x .1 x 5.06l, .19 #File Name: 147429165180 pages Peter Pan Goes Wrong Modern Plays | File size: 68.Mb

Henry Lewis, Henry Shields, Jonathan Sayer : Peter Pan Goes Wrong (Modern Plays) before purchasing it in order to gauge whether or not it would be worth my time, and all praised Peter Pan Goes Wrong (Modern Plays):

Tonight Neverland is fleshed out with plenty of plant life, certainly bettering 2011's production of Jack and the Bean-

Cactus. So, with no further ado, please put your hands together for J.M. Barrie's Christmas classic: Peter Pan! The inept and accident-prone Cornley Polytechnic Drama Society set out to present J. M. Barrie's classic tale of Peter Pan, their most audacious production to date. Flying? Pyrotechnics? Sharp hooks? What ensues is two acts of hysterical disaster. You'll laugh, they'll cry. Something so wrong has never been so right. From the mischievous minds of the West End and Edinburgh hit *The Play That Goes Wrong* comes this highly original, chaos-filled re-telling of J.M. Barrie's much-loved classic. *Peter Pan Goes Wrong* received its world premiere at the Pleasance Theatre, London, on 10 December 2013 and transferred to the West End on 4 December 2015. This edition was published to coincide with the West End transfer.

"Immaculately staged . . . reduced even a staid matinee audience to hysterics" - The Times on "The Play That Goes Wrong"
"Effortless slapstick that Keaton and Chaplin would be hard pushed to trump" - Whatsonstage on "The Play That Goes Wrong"
"For a side-splitting, jolly good laugh, *The Play That Goes Wrong* is exactly what the doctor ordered" - British Theatre Guide on "The Play That Goes Wrong"
"A highly developed sense of mischief and cheeky aplomb . . . it's all very silly . . . but it's done with just the right amount of tongue-in-cheek" - Guardian on "The Play That Goes Wrong"
"Boy does it hit the funny bone ... a rising tide of hysteria ... an enduring cult hit in the making" - Daily Telegraph on "The Play That Goes Wrong"
"superb use of slapstick, requiring split second timing and great comic aplomb. All of the things that worked so well in the first play are just as good here . . . loads of laugh out loud moments." - Nottingham Post
"incredible comedy timing" - Yorkshire Post
"sop up the hype and ready yourself to be etched with even deeper laughter lines, it is fantastic, absolutely fantastic . . . Giddily good fun, it's a silly, clattering mess, but in all the right ways." - Cambridge News
"The play gives an affectionate nod to the more bizarre aspects of the great British panto, from cheesy dance routines to excruciating dialogue." - Manchester Evening News
"Rarely has something so wrong seemed so right." - Edinburgh Evening News
"a hugely funny send-up" - Birmingham Post
"In the Cornley world, if something can malfunction, it will do so . . . I got hurt just laughing." - Chronicle Live
About the Author
Mischievous Theatre is a comedy theatre company based in London, first formed in 2008 by a group of graduates and students of The London Academy of Music and Dramatic Art. Since first forming the company has created and presented a number of productions across the UK and in Europe. The company is led by Artistic Director Henry Lewis and Company Director Jonathan Sayer.